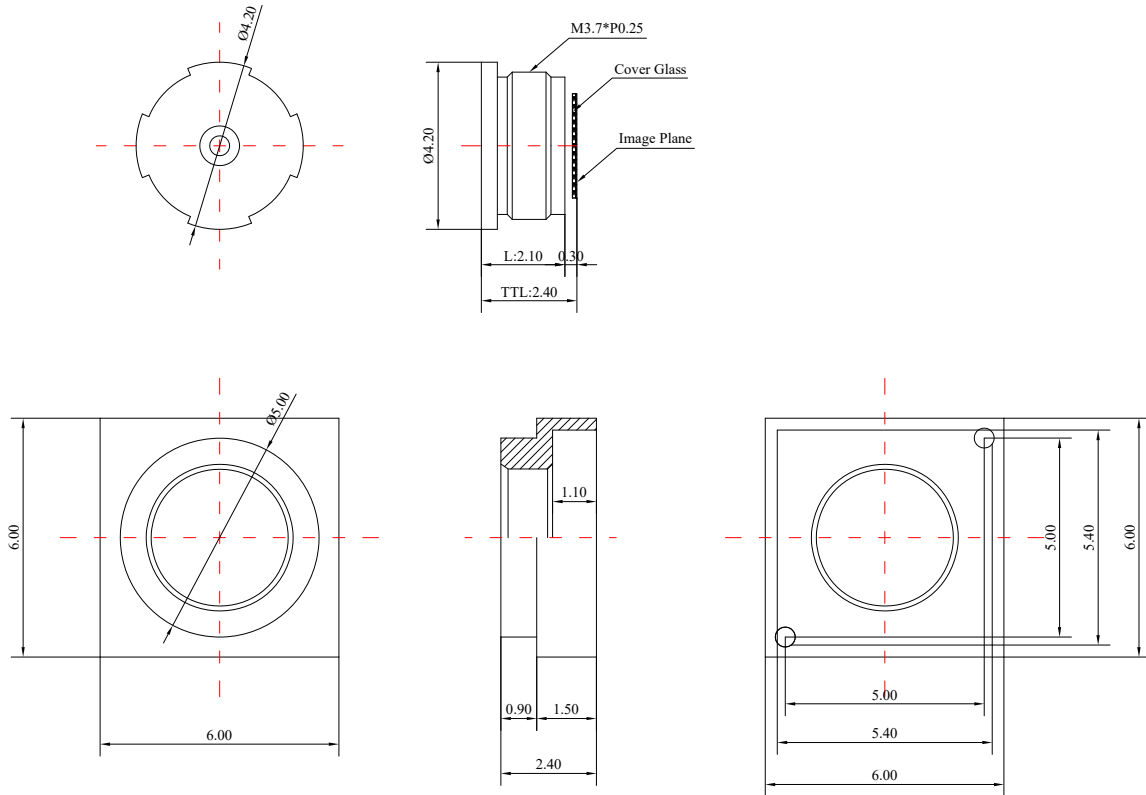


1	Type	M3.7 Lens			
2	Resolution	5MP			
3	Image Format	1/7"			
4	Image Circle	φ2.8mm(MAX)			
5	EFL	1.02mm			
6	TTL	2.4mm			
7	F/NO.	F2.4			
8	FFL (M)	0.3mm			
9	BFL (O)	0.4mm			
10	For Sensor	1/7"	1/9"	1/10"	
11	F.O.V	Horizontal	78°	62°	53°
12		Vertical	59°	46°	40°
13		Diagonal	98°	78°	67°
14	TV Distortion	<-1.5%			
15	Relative Ill.	>76%			
16	Chief Ray Angle	<29°			
17	M.O.D	0.1m~∞			
18	Mount Type	M3.7*P0.25			
19	Dimension Figure	φ4.2*L2.1mm			
20	Lens Structure	4P			
21	IR-Filter	Non-IR			
22	Waterproof	No			
23	Weight	---			
24	Iris Operation	Fixed			
25	Zoom Operation	Fixed			
26	Focus Operation	Manual			
27	Operating Temperature	-15° ~+45°			
28	Storage Temperature	-15° ~+45°			



Scale	Remark	Tolerances	Date	Revised	
4:1	X	±0.2	2024-03-18	CH8076A Rev1.0	
	X.0	±0.15			
Units	X.00	±0.10	Design	Linda	2024-02-27
	X.000	±0.001	Checked	Anna	2024-03-11
mm	Angle	±0.5°	Approval	Sanmu	2024-03-17

福州创安光电科技有限公司
 FUZHOU CHUANGAN OPTICS CO., LTD

