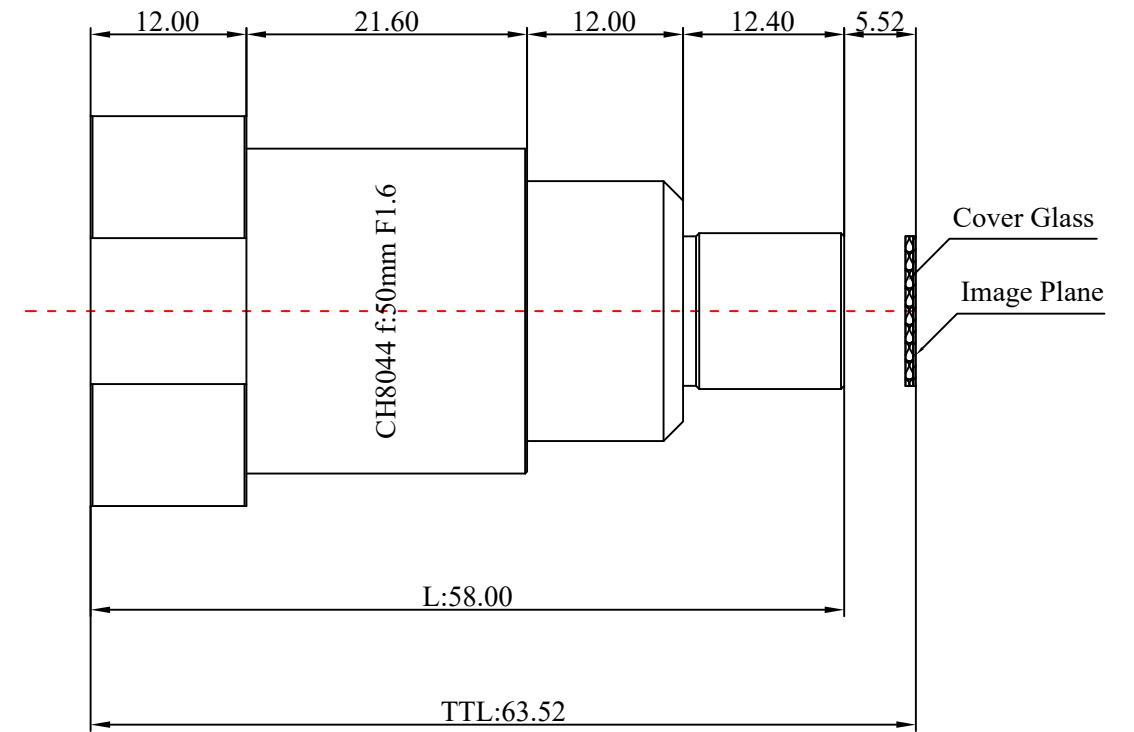
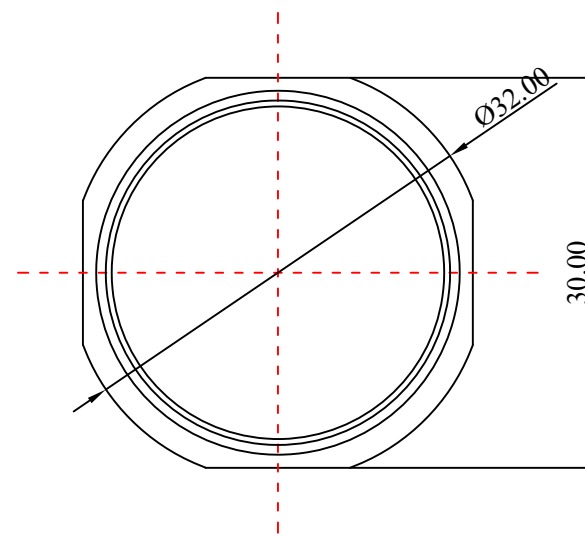


1	Type	M12 Lens	
2	Resolution	3MP	
3	Image Format	1/2.7"	
4	Image Circle	φ6.6mm(MAX)	
5	EFL	50mm	
6	TTL	63.52mm	
7	F/NO.	F1.6	
8	FFL (M)	5.52mm	
9	BFL (O)	9.62mm	
10	For Sensor	1/2.7"	
11	F.O.V	Horizontal	6.6°
12		Vertical	4.9°
13		Diagonal	8.2°
14	TV Distortion	<-1.5%	
15	Relative Ill.	>50%	
16	Chief Ray Angle	<15.7°	
17	M.O.D	0.5m~∞	
18	Mount Type	M12*P0.5	
19	Dimension Figure	Φ32.0*L58.00mm	
20	Lens Structure	12G	
21	IR-Filter	Non-IR	
22	Waterproof	No	
23	Weight	47.5g	
24	Iris Operation	Fixed	
25	Zoom Operation	Fixed	
26	Focus Operation	Manual	
27	Operating Temperature	-20° ~+85°	
28	Storage Temperature	-20° ~+85°	



Scale	Remark	Tolerances	Date	Revised		福州创安光电科技有限公司 FUZHOU CHUANGAN OPTICS CO., LTD
4:1	X	±0.2	2022-11-02	CH8044A Rev1.0		
	X.0	±0.15				
Units	X.00	±0.10	Design	Linda	2022-07-01	
	X.000	±0.001	Checked	Anna	2022-07-09	
mm	Angle	±0.5°	Approval	Sanmu	2022-09-10	

