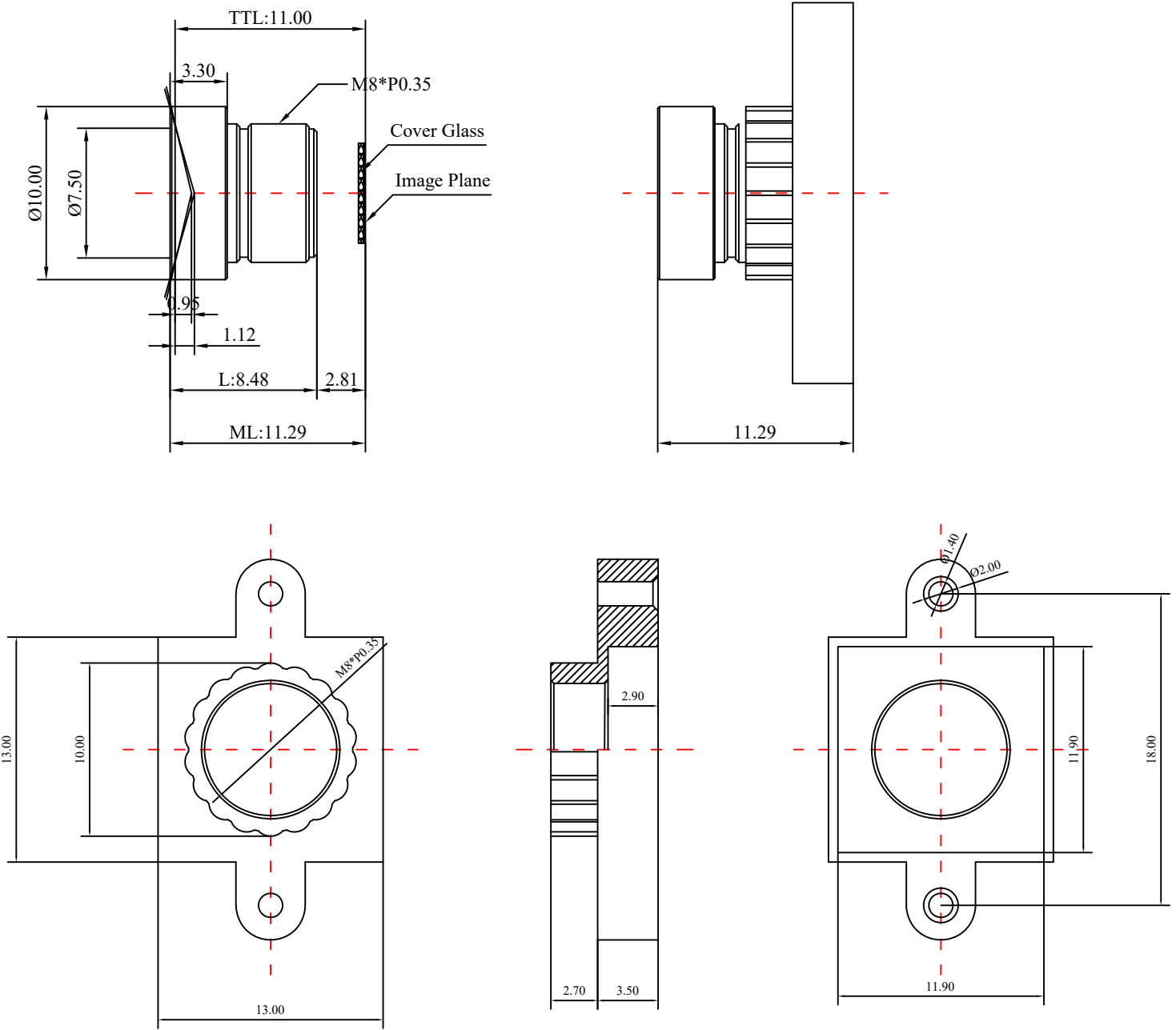


1	Type	M8 Lens			
2	Resolution	MP			
3	Image Format	1/2.9"			
4	Image Circle	φ6.3mm(MAX)			
5	EFL	1.9mm			
6	TTL	11.00mm			
7	F/NO.	2.0			
8	FFL (M)	2.81mm			
9	BFL (O)	3.52mm			
10	For Sensor	1/2.9"	1/3"	1/4"	
11	F.O.V	Horizontal	133.8°	130°	100°
12		Vertical	81.4°	79.5°	78°
13		Diagonal	153.4°	148°	121°
14	TV Distortion	<-24%	<-22.2%	<-11.2%	
15	Relative Ill.	>34.7%	>37%	>52%	
16	Chief Ray Angle	<30.7°	<29.8°	<24°	
17	M.O.D	0.1m~∞			
18	Mount Type	M8*P0.35			
19	Dimension Figure	φ10.00*L8.48mm			
20	Lens Structure	5P			
21	IR-Filter	T=50%&IR650±10nm			
22	Waterproof	No			
23	Weight	Lens 0.8g+Holder 0.5g			
24	Iris Operation	Fixed			
25	Zoom Operation	Fixed			
26	Focus Operation	Manual			
27	Operating Temperature	-20° ~+85°			
28	Storage Temperature	-20° ~+85°			



Scale	Remark	Tolerances	Date	Revised		福州创安光电科技有限公司 FUZHOU CHUANGAN OPTICS CO., LTD
4:1	X	±0.2	2022-09-16	CH3811AB+5314A Rev1.0		
	X.0	±0.15				
Units	X.00	±0.10	Design	Linda	2022-07-01	
	X.000	±0.001	Checked	Anna	2022-07-09	
mm	Angle	±0.5°	Approval	Sanmu	2022-09-10	

