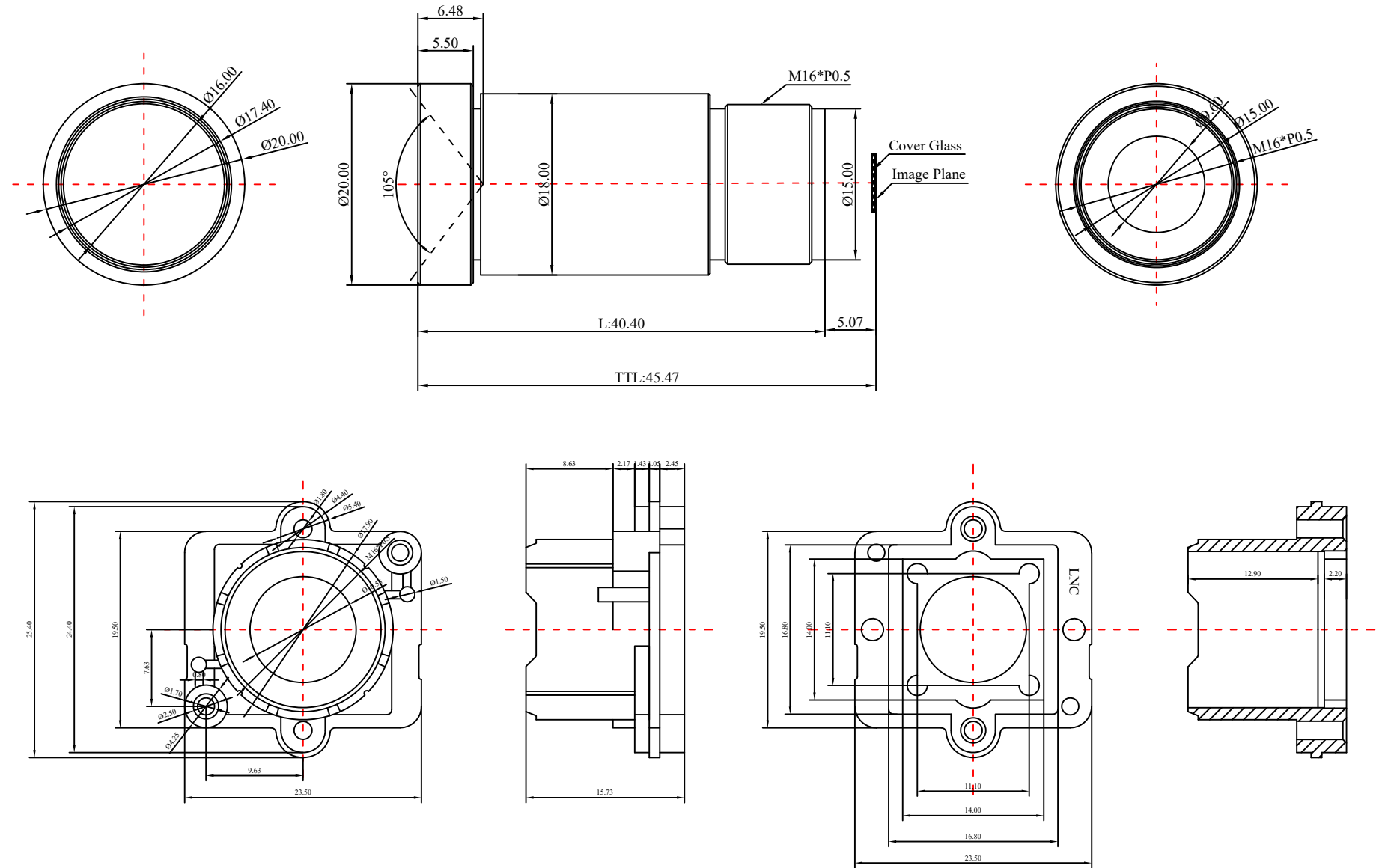
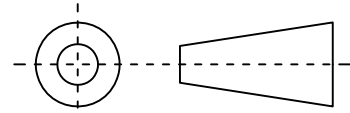


1	Type	Starlight Lens	
2	Resolution	8MP	
3	Image Format	1/1.8"	
4	Image Circle	φ9.0mm(MAX)	
5	EFL	5.4mm	
6	TTL	45.47mm	
7	F/NO.	1.0	
8	FFL (M)	5.07mm	
9	BFL (O)	5.70mm	
10	For Sensor	1/1.8" 16:9	1/1.8" 4:3
11	F.O.V	Horizontal	88°
12		Vertical	46°
13		Diagonal	105°
14	OPT Distortion	<-38%	
15	Relative Ill.	>65%	
16	Chief Ray Angle	<10°	
17	M.O.D	0.1m~∞	
18	Mount Type	M16*P0.5	
19	Dimension Figure	φ20.00*L40.40mm	
20	Lens Structure	10G	
21	IR-Filter	Non-IR	
22	Waterproof	No	
23	Weight	22.8g	
24	Iris Operation	Fixed	
25	Zoom Operation	Fixed	
26	Focus Operation	Manual	
27	Operating Temperature	-20° ~+85°	
28	Storage Temperature	-20° ~+85°	



Scale	Remark	Tolerances	Date	Revised	
4:1	X	±0.2	2020-05-14	CH3674A Rev1.0	
	X.0	±0.15			
Units	X.00	±0.10	Design	Linda	2020-03-13
	X.000	±0.001	Checked	Anna	2020-04-09
mm	Angle	±0.5°	Approval	Sanmu	2020-04-19

福州创安光电科技有限公司
 FUZHOU CHUANGAN OPTICS CO., LTD



3D Angle Projection