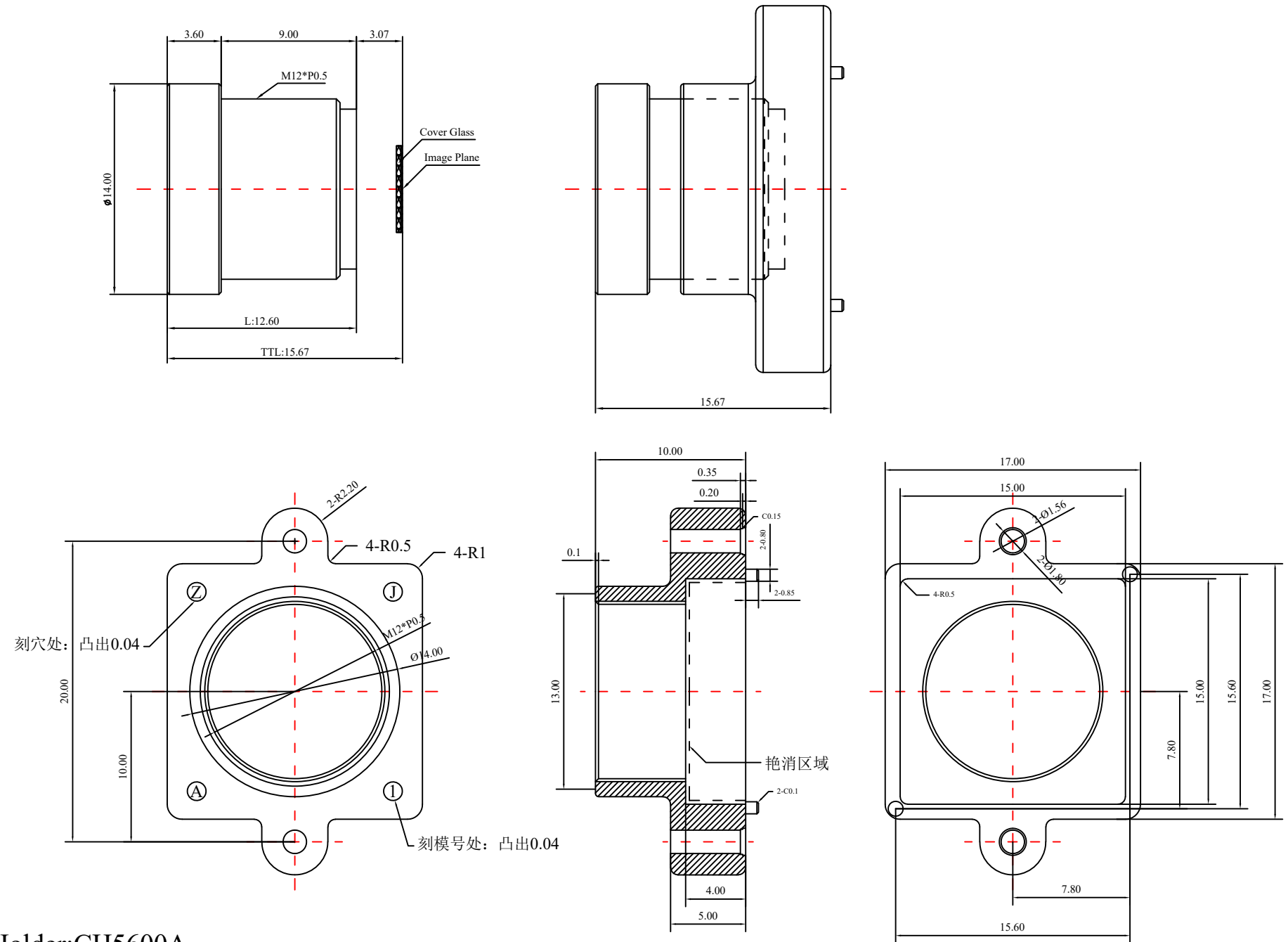


1	Type	Wide Angle Lens	
2	Resolution	MP	
3	Image Format	1/2.7"	
4	Image Circle	φ7.1mm(MAX)	
5	EFL	3.20mm	
6	TTL	15.67mm	
7	F/NO.	2.0	
8	FFL (M)	3.07mm	
9	BFL (O)	4.75mm	
10	For Sensor	1/2.7"	
11	F.O.V	Horizontal	117°
12		Vertical	60°
13		Diagonal	146°
14	TV Distortion	<-14.67%	
15	Relative Ill.	>73%	
16	Chief Ray Angle	<14.3°	
17	M.O.D	0.1m~∞	
18	Mount Type	M12*P0.5	
19	Dimension Figure	φ14.00*L12.60mm	
20	Lens Structure	6G	
21	IR-Filter	T=50% & 650±10nm	
22	Waterproof	IP67	
23	Weight	---	
24	Iris Operation	Fixed	
25	Zoom Operation	Fixed	
26	Focus Operation	Manual	
27	Operating Temperature	-15° ~+65°	
28	Storage Temperature	-15° ~+65°	



Holder:CH5600A

Scale	Remark	Tolerances	Date	Revised	
5:1	X	±0.2	2019-08-21	CH3613A Rev1.0	
	X.0	±0.15			
Units	X.00	±0.10	Design	Linda	2018-03-03
	X.000	±0.001	Checked	Anna	2018-05-27
mm	Angle	±0.5°	Approval	Sanmu	2018-06-06

 福州创安光电科技有限公司  
 FUZHOU CHUANGAN OPTICS CO., LTD
