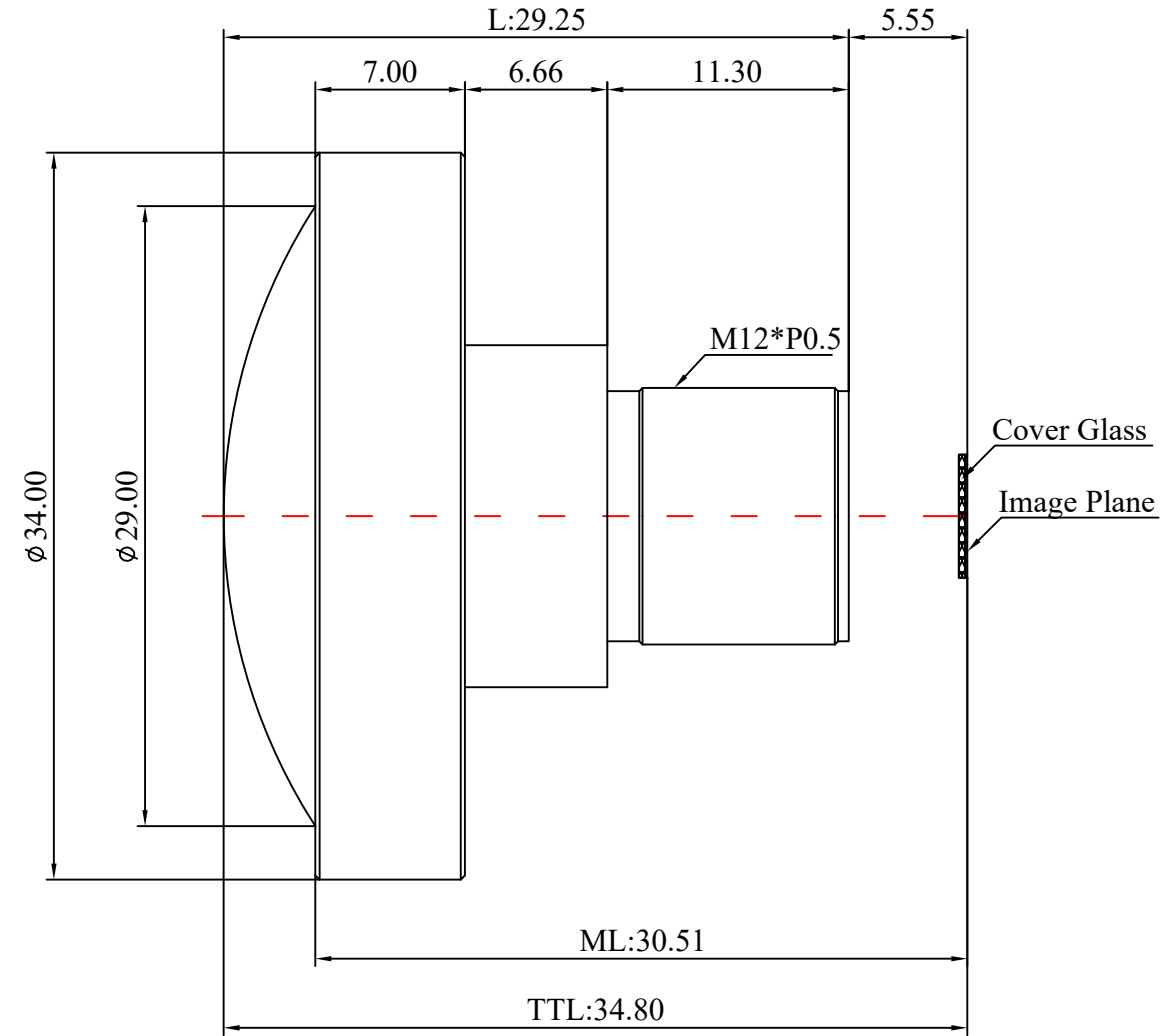
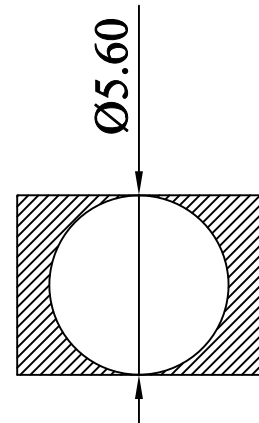
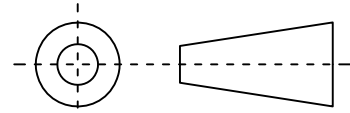


1	Type	Fisheye Lens	
2	Resolution	8.8MP	
3	Image Format	1/1.7"	
4	Image Circle	φ5.6mm(V-MAX)	
5	EFL	1.85mm	
6	TTL	34.80mm	
7	F/NO.	2.0	
8	FFL (M)	5.55mm	
9	BFL (O)	6.37mm	
10	For Sensor	1/1.7"	
11	F.O.V	Horizontal	185°
12		Vertical	185°
13		Diagonal	185°
14	TV Distortion	<-32.46%	
15	Relative Ill.	>70%	
16	Chief Ray Angle	<23°	
17	M.O.D	0.1m~∞	
18	Mount Type	M12*P0.5	
19	Dimension Figure	φ34.00*L29.25mm	
20	Lens Structure	8G	
21	IR-Filter	T=50% & 650±10nm	
22	Waterproof	IP67	
23	Weight	31.7g	
24	Iris Operation	Fixed	
25	Zoom Operation	Fixed	
26	Focus Operation	Manual	
27	Operating Temperature	-20° ~+85°	
28	Storage Temperature	-20° ~+85°	



Scale	Remark	Tolerances	Date	Revised		福州创安光电科技有限公司 FUZHOU CHUANGAN OPTICS CO., LTD
4:1	X	±0.2	2019-08-16	CH3534A Rev1.0		
	X.0	±0.15				
Units	X.00	±0.10	Design	Linda	2018-09-25	 3D Angle Projection
	X.000	±0.001	Checked	Anna	2018-10-10	
mm	Angle	±0.5°	Approval	Sanmu	2018-10-13	