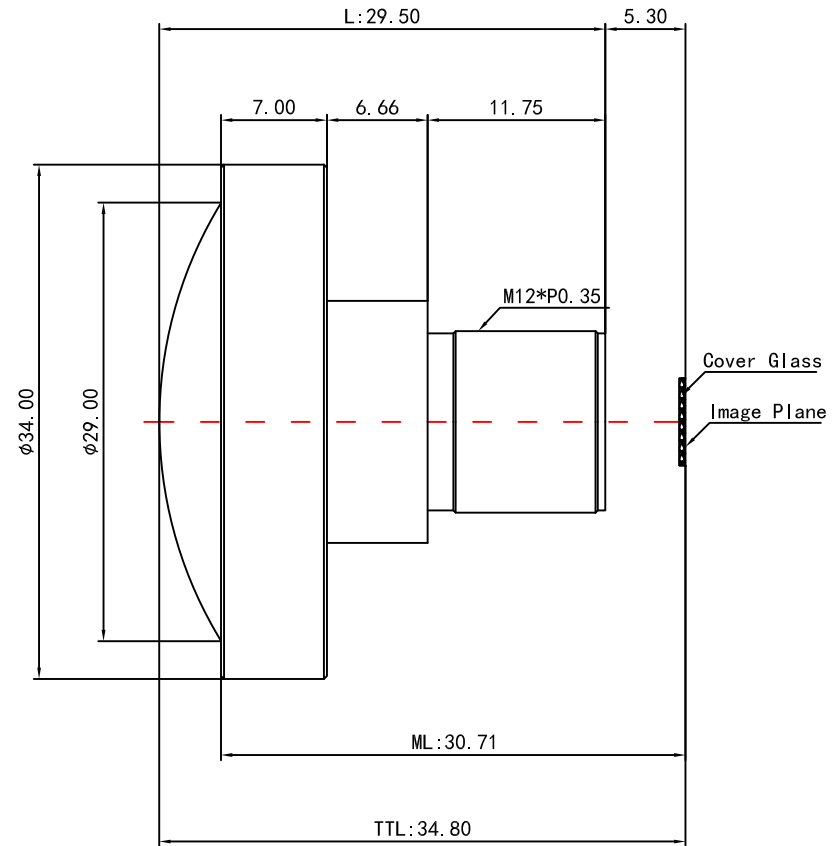
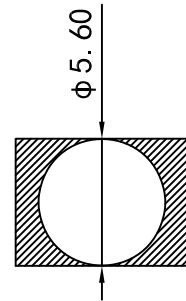


|    |                       |                  |      |
|----|-----------------------|------------------|------|
| 1  | Type                  | Fisheye Lens     |      |
| 2  | Resolution            | 8.8MP            |      |
| 3  | Image Format          | 1/1.7"           |      |
| 4  | Image Circle          | φ5.6mm(V-MAX)    |      |
| 5  | EFL                   | 1.90mm           |      |
| 6  | TTL                   | 34.80mm          |      |
| 7  | F/NO.                 | 2.0              |      |
| 8  | FFL (M)               | 5.30mm           |      |
| 9  | BFL (O)               | 6.37mm           |      |
| 10 | For Sensor            | 1/1.7"           |      |
| 11 | F.O.V                 | Horizontal       | 185° |
| 12 |                       | Vertical         | 185° |
| 13 |                       | Diagonal         | 185° |
| 14 | TV Distortion         | <-32.46%         |      |
| 15 | Relative Ill.         | >70%             |      |
| 16 | Chief Ray Angle       | <23°             |      |
| 17 | M.O.D                 | 0.1m~∞           |      |
| 18 | Mount Type            | M12*P0.5         |      |
| 19 | Dimension Figure      | φ34.00*L29.50mm  |      |
| 20 | Lens Structure        | 8G               |      |
| 21 | IR-Filter             | T=50%&IR650±10nm |      |
| 22 | Waterproof            | No               |      |
| 23 | Weight                | 31.7g            |      |
| 24 | Iris Operation        | Fixed            |      |
| 25 | Zoom Operation        | Fixed            |      |
| 26 | Focus Operation       | Manual           |      |
| 27 | Operating Temperature | -20° ~+85°       |      |
| 28 | Storage Temperature   | -20° ~+85°       |      |



| Scale | Remark | Tolerances | Date       | Revised       |            |
|-------|--------|------------|------------|---------------|------------|
| 2 : 1 | X      | ±0.2       | 2019-06-02 | CH334B Rev1.0 |            |
|       | X.0    | ±0.15      |            |               |            |
| Units | X.00   | ±0.10      | Design     | Linda         | 2018-03-26 |
|       | X.000  | ±0.001     | Checked    | Anna          | 2018-05-20 |
| mm    | Angle  | ±0.5°      | Approval   | Sanmu         | 2018-05-20 |

福州创安光电科技有限公司  
 FUZHOU CHUANGAN OPTICS CO., LTD

