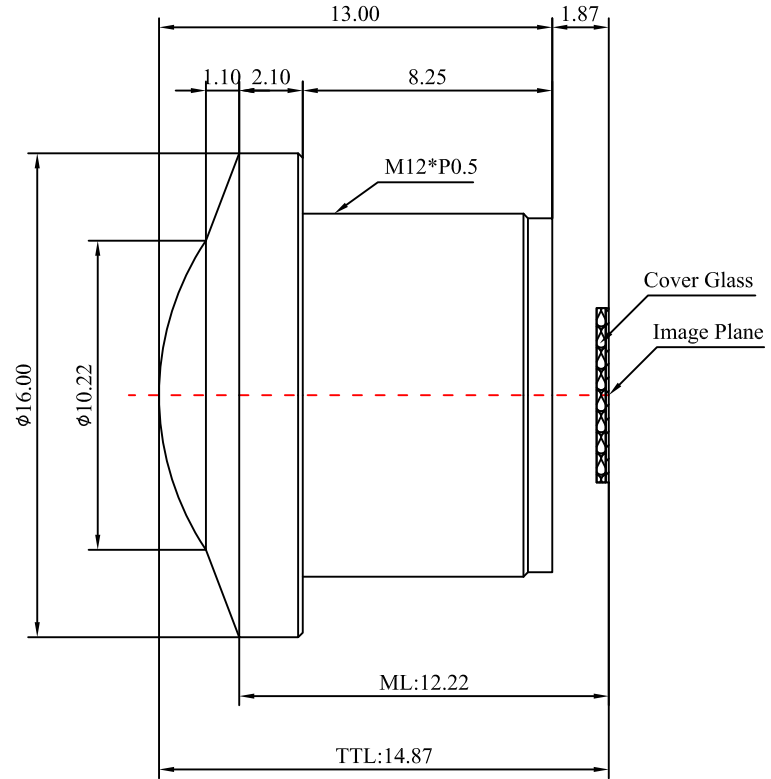
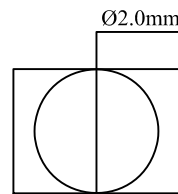
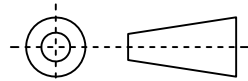


1	Type	Fisheye Lens	
2	Resolution	5MP	
3	Image Format	1/4"	
4	Image Circle	φ2.0mm(V-MAX)	
5	EFL	0.76mm	
6	TTL	14.87mm	
7	F/NO.	2.2	
8	FFL (M)	1.87mm	
9	BFL (O)	2.52mm	
10	For Sensor	1/4"	
11	F.O.V	Horizontal	205°
12		Vertical	205°
13		Diagonal	205°
14	TV Distortion	<-81%	
15	Relative Ill.	>98%	
16	Chief Ray Angle	<13.4°	
17	M.O.D	0.1m~∞	
18	Mount Type	M12*P0.5	
19	Dimension Figure	φ16.00*L13.00mm	
20	Lens Structure	6G	
21	IR-Filter	Non-IR	
22	Waterproof	No	
23	Weight	5.2g	
24	Iris Operation	Fixed	
25	Zoom Operation	Fixed	
26	Focus Operation	Manual	
27	Operating Temperature	-20° ~+85°	
28	Storage Temperature	-20° ~+85°	



Scale	Remark	Tolerances	Date	Revised	
4:1	X	±0.2	2021-03-12	CH2504B Rev1.2	
	X.0	±0.15			
Units	X.00	±0.10	Design	Linda	2015-05-15
	X.000	±0.001	Checked	Anna	2015-07-12
mm	Angle	±0.5°	Approval	Sanmu	2015-07-13

福州创安光电科技有限公司
FUZHOU CHUANGAN OPTICS CO., LTD



3D Angle Projection