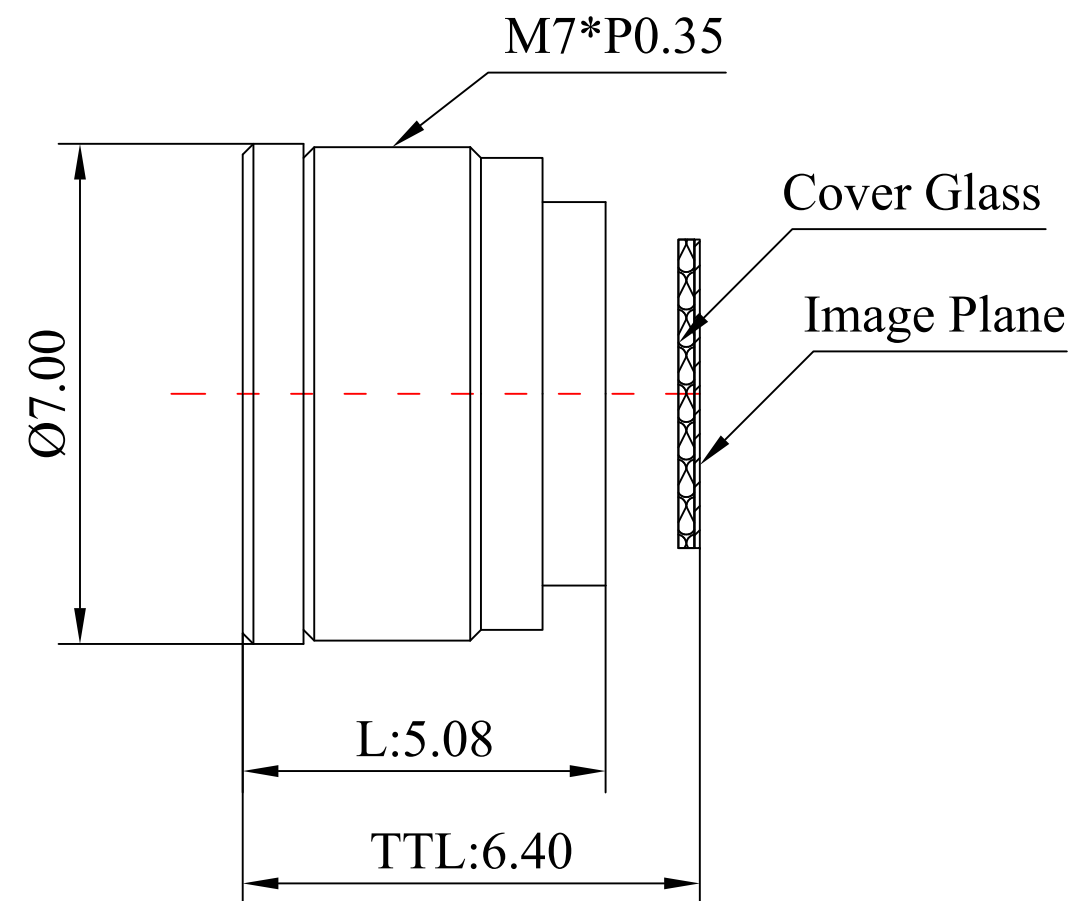
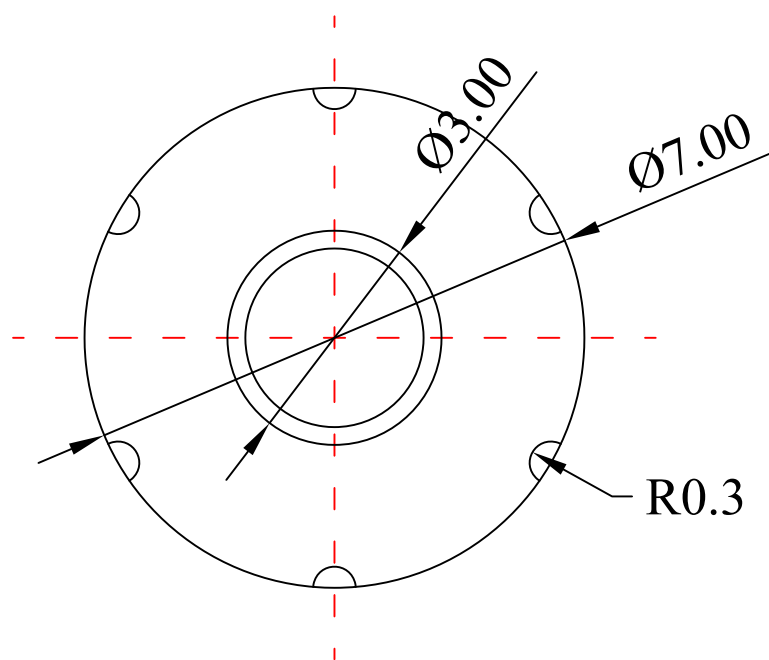


| | | |
|----|-----------------------|------------------|
| 1 | Type | M7 Board Lens |
| 2 | Resolution | 5MP |
| 3 | Image Format | 1/4" |
| 4 | Image Circle | φ4.8mm(MAX) |
| 5 | EFL | 6.0mm |
| 6 | TTL | 6.40mm |
| 7 | F/NO. | 2.2 |
| 8 | FFL (M) | 0.90mm |
| 9 | BFL (O) | 1.13mm |
| 10 | For Sensor | 1/4' |
| 11 | F.O.V | 40° |
| 12 | | |
| 13 | | |
| 14 | OPT Distortion | <-1% |
| 15 | Relative Ill. | >65% |
| 16 | Chief Ray Angle | <25° |
| 17 | M.O.D | 0.1m~∞ |
| 18 | Mount Type | M7*P0.35 |
| 19 | Dimension Figure | Ø7.0*L5.08mm |
| 20 | Lens Structure | 5P |
| 21 | IR-Filter | T=50%&IR650±10nm |
| 22 | Waterproof | No |
| 23 | Weight | 0.2g |
| 24 | Iris Operation | Fixed |
| 25 | Zoom Operation | Fixed |
| 26 | Focus Operation | Manual |
| 27 | Operating Temperature | -10° ~+45° |
| 28 | Storage Temperature | -10° ~+45° |



| Scale | Remark | Tolerances | Date | Revised | | 福州创安光电科技有限公司 FUZHOU CHUANGAN OPTICS CO., LTD |
|-------|--------|------------|------------|-----------------|------------|---|
| 4:1 | X | ±0.2 | 2021-05-21 | CH2016AB Rev1.0 | | |
| | X.0 | ±0.15 | | | | |
| Units | X.00 | ±0.10 | Design | Linda | 2020-11-16 | |
| | X.000 | ±0.001 | Checked | Anna | 2020-12-09 | |
| mm | Angle | ±0.5° | Approval | Sanmu | 2021-01-11 | |

